



# Strategic Plan 2025-2030

**BUILDING OUR EARLY  
CHILDHOOD SYSTEM**

# Table of Contents

1	<a href="#"><u>Executive Summary</u></a>
3	<a href="#"><u>The Organization</u></a>
4	<a href="#"><u>Child Health and Development</u></a>
5	<a href="#"><u>Early Childhood Workforce and Program Supports</u></a>
6	<a href="#"><u>Early Childhood Mental Health Supports</u></a>
7	<a href="#"><u>Family and Caregiver Supports</u></a>

# Executive Summary

## Our Mission:

To promote a child-centered school readiness system that fosters early learning, facilitates healthy child development, and promotes family success in Grand and Jackson Counties.

## Our Vision:

A community that values the health and development of young children, their families, and the professionals who provide quality early care and education.

Grand Beginnings, a nonprofit established in 2003, works to strengthen early childhood services in Grand and Jackson Counties by leveraging partnerships and resources to support children, families, and the community's success.

## Our Goals

Goal 1	Improve the collaboration and coordination of comprehensive early childhood services throughout Grand and Jackson County.
Goal 2	Integrate and align professionals and caregivers to support whole child health and development.
Goal 3	Support and build a high-quality early childhood workforce and environments that meet true community needs.



## Our Strategic Commitment

To accomplish our mission and achieve our vision, Grand Beginnings leverages partnerships and resources that build and strengthen a comprehensive early childhood system in Grand and Jackson Counties. Our Strategic Priorities are:

<p>Child Health and Development</p>	<p>Young children have access to comprehensive supports to maximize healthy development through education, advocacy, and equitable service systems that meet the needs of children and their families.</p>
<p>Early Childhood Workforce and Program Supports</p>	<p>Early childhood professionals and programs have the comprehensive supports needed to provide resilient, high-quality services that meet community needs.</p>
<p>Early Childhood Mental Health Supports</p>	<p>Young children, their families, early childhood professionals, and the perinatal population have access to evidence-informed mental health supports.</p>
<p>Family and Caregiver Supports</p>	<p>Families and caregivers of young children have the supports needed to be successful and thrive in our community.</p>

# The Organization

Within our nonprofit organization, we serve as the Early Childhood Council, Local Coordinating Organization, and Child Care Resource and Referral Agency as appointed by the State of Colorado and Grand and Jackson Counties' Board of County Commissioners.

## Grand and Jackson Early Childhood Council (ECC)

An early childhood systems building coalition of community members and leaders representing families, early childhood education, health, mental health, family and child support services, K-12 education, businesses, and local government.

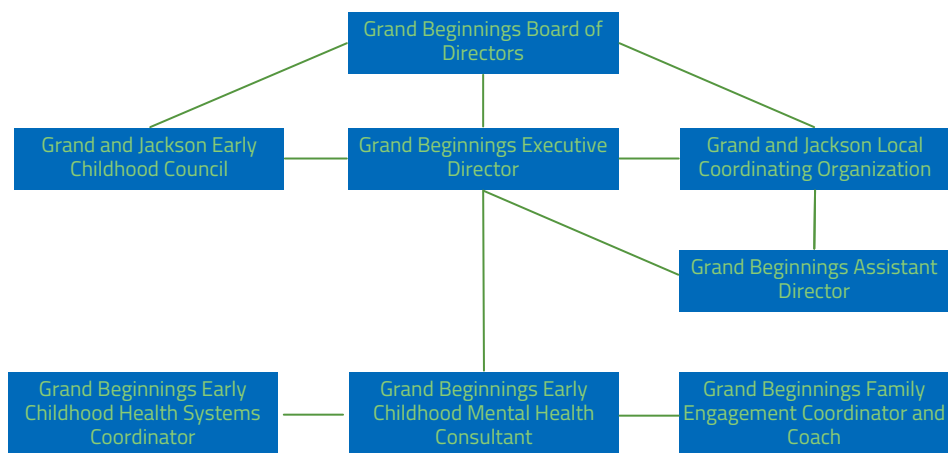
## Grand and Jackson Local Coordinating Organization (LCO)

Provides expertise to support and optimize implementation of Colorado's Universal Preschool Program in our community.

## Child Care Resource and Referral (CCR&R) Agency for Grand and Jackson Counties

Serves as a resource hub for families, child care professionals, and communities by providing: Family referrals to local child care/health/mental health/financial assistance/other community services, information on licensing requirements, technical assistance/funding/professional development/resources to child care providers to improve quality/best practices, local child care needs data collection, and advocacy with statewide partners.

## ORGANIZATIONAL CHART



# Child Health and Development

Strategic Commitment: Young children have access to comprehensive supports to maximize healthy development through education, advocacy, and equitable service systems that meet the needs of children and their families.



## OUTCOMES:

Cross-sector, routine, standardized and universal developmental and preventive health screenings are administered to young children and their caregivers with referral and follow-up pathways that allow families to effectively access services.

Families, caregivers, and early childhood programs have the knowledge and resources to allow them to engage in healthy behaviors, including eating healthy food, proper use of car seats and helmets, routine immunization, physical activity, safe sleep, sun safety, and more.

Young children and their families have affordable access to coordinated, continuous, and comprehensive health care services through culturally-appropriate medical homes.

# Early Childhood Workforce and Program Supports

Strategic Commitment: Early childhood professionals and programs have the comprehensive supports needed to provide resilient, high-quality services that meet community needs.



## OUTCOMES:

Early childhood programs have the knowledge and the resources to implement best practices in business administration, recruitment, and retention (including adequate compensation) to support program resilience and a fully-staffed and qualified early childhood professional workforce.

Early childhood programs have the coaching, technical assistance, professional development, and resources needed for continuous quality improvement and increased Colorado Early Childhood Educator Credential Levels.

Best practices and curriculum are fully-utilized to support early learning, healthy development, nurturing relationships, family needs, and improved child outcomes.

Early childhood programs have the capacity, accessibility, and affordability to meet true family and community needs.

# Early Childhood Mental Health Supports

Strategic Commitment: Young children, their families, early childhood professionals, and the perinatal population have access to evidence-informed mental health supports.



## OUTCOMES:

Young children, their families, early childhood professionals, and the perinatal population have access to services and supports that support the positive development social-emotional and mental health through preventive services and intervention.

Early childhood programs and other community service providers have the professional development and resources to universally implement social-emotional best practices and support children with challenging behaviors without removing children from their programs for behavior or mental health concerns.

Implement evidence-based models for early childhood mental health consultation that work in alignment with the state-wide system, regional partners, and local community efforts.

# Family and Caregiver Supports

Strategic Commitment: Families and caregivers of young children have the supports needed to be successful and thrive in our community.



## OUTCOMES:

Families and caregivers have culturally-appropriate knowledge, resources, and support to engage in best practices surrounding early learning, social-emotional development, positive behavior guidance strategies, relationships, self-care, and healthy behaviors.

Families and caregivers are actively recruited into leadership opportunities to advocate for the needs of families and young children in the community.

Community-based, evidence-informed strategies are implemented to reduce child maltreatment and child poverty, and improve positive parenting practices and family outcomes.

Families and caregivers have the resources and relationships to support them to stay and thrive in our community.



480 E Agate Ave, PO Box 42, Granby, CO  
970.725.3391  
[www.grandbeginnings.org](http://www.grandbeginnings.org)